

# The Dragonfly

1815 Sq. ft. Modern Home



## Home Features

- 1815 sq. ft. Single Story Custom Home
- Master Suite w/ Large Bath & WIC
- Vaulted Great Room w/ 3 Season Room
- 3 Bedrooms w/ Jack n Jill Bathroom, WIC
- Large Kitchen w/ Oversized Walk In Pantry
- 3.5 Car Garage with Side Entry
- First Floor Command Center w/ WIC

## Mikkelson Quality

- 2" x 6" Exterior Wall Construction
- TGI Silent Floor Joists, Energy Heel Trusses
- 9' Tall Concrete Foundation
- Lifetime Dimensional Shingles
- Kohler, Moen, Hardie, Quality Inclusions
- R-50 Attic Insulation, Foam Wall Insulation
- Andersen Low E, Argon Windows

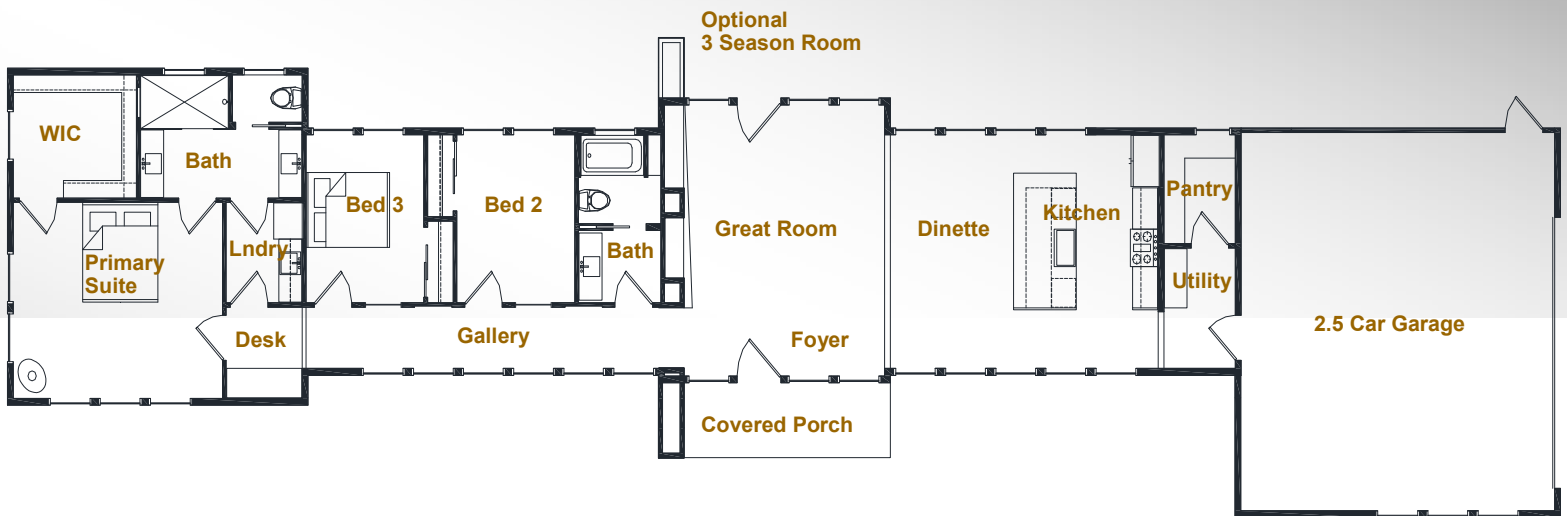


*Building Innovation on Tradition*



# The Dragonfly

1815 Sq. Ft. Modern Home



## FEATURES

- 1815 SQ. FT. PLUS 3 SEASON COV. PATIO
- 2+ CAR ATTACHED GARAGE
- OPTIONAL STAIRS TO LOWER LEVEL
- DRAGONFLY ROOF / VAULTED CEILINGS
- OVERSIZED MASTER BEDROOM SUITE
- AGE IN PLACE DESIGN, CURBLESS SHOWERS
- OPEN FLOOR PLAN W/ AMPLE SUNLIGHT
- LIFETIME DIMENSIONAL SHINGLES
- WOOD BURNING FIREPLACE W/ STONE
- 9' TALL CONC. FOUNDATION
- TGI SILENT FLOOR SYSTEM
- CUSTOM DESIGNED CABINETRY
- ANGLED STONE HEARTH

## QUALITY

- R-50 ATTIC INSULATION / SPRAY FOAM
- PASSIVE SOLAR DESIGN
- PROGRAMMABLE THERMOSTATS AND MULTIPLE HVAC ZONES
- CUSTOM DESIGNED CLOSET SYSTEM
- ENERGY STAR APPLIANCES
- LOW-E ARGON FILLED DUAL PANE ANDERSEN WINDOWS
- TYVEK WRAP & EXTENSIVE CAULKING
- LOW MAINTENANCE EXTERIOR
- INSULATED, RAISED PANEL GARAGE DOORS W/ KEYLESS WIFI OPENERS
- SOLID CORE INTERIOR DOORS

*Building Innovation on Tradition*