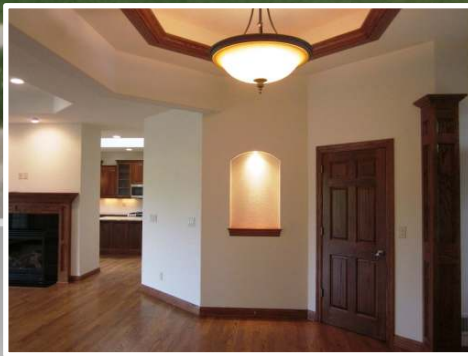


# The Sonoma

2070 sq. ft. Grand Foyer 1 Story Home



## Model Features

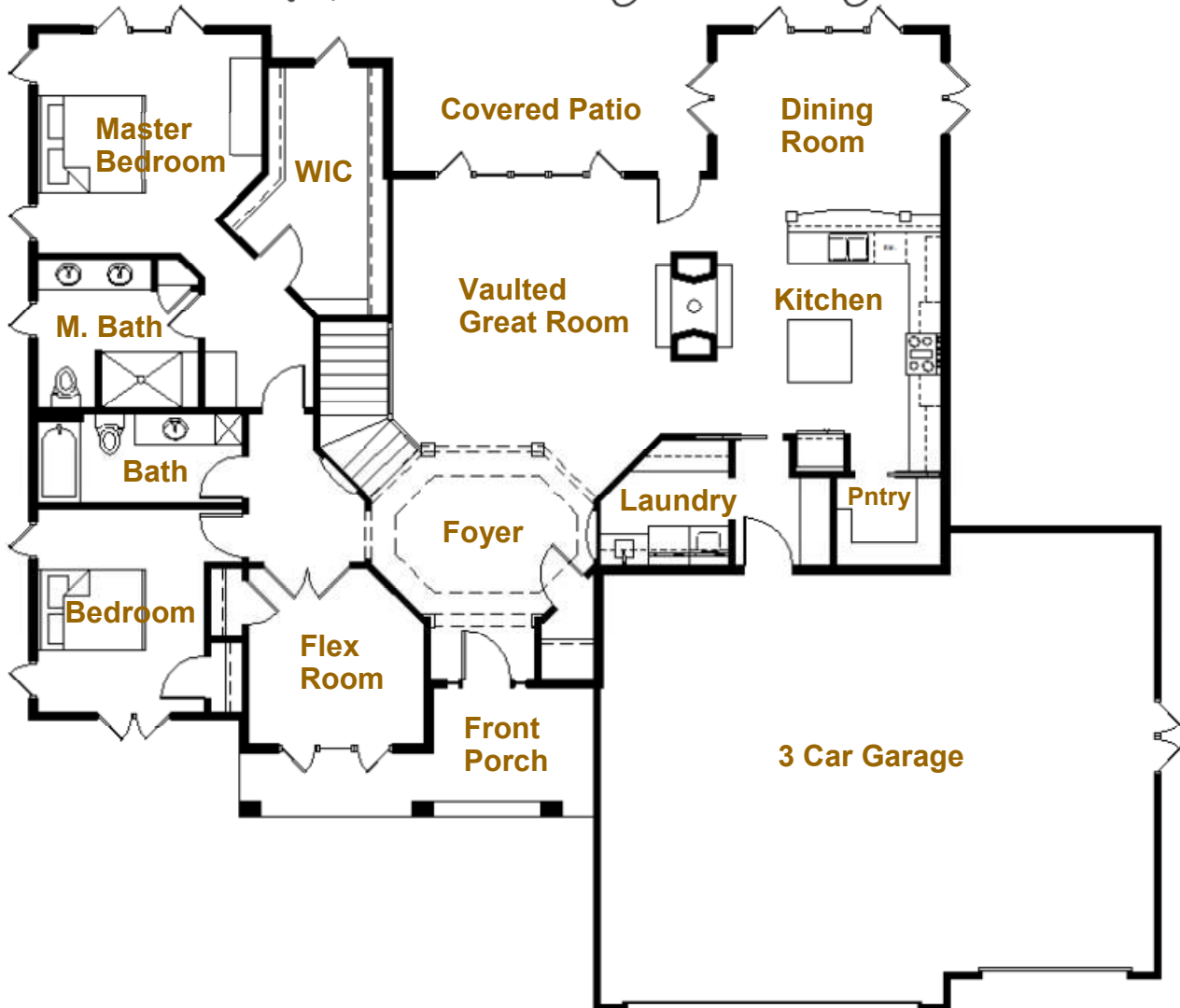
- Stunning Central Foyer
- Generous Master Suite
- 2 sided Fireplace Option
- 3 Bedrooms, 2 Bathrooms
- Formal Dining / Office Flex Room
- Trayed Great Room, Dining, Foyer
- Walk-In Pantry
- Eat-in Island in Kitchen



*Building Innovation on Tradition*

# The Sonoma

2070 sq. ft. Grand Foyer 1 Story Home



## Mikkelson Advantage

- Peace of mind: work with a highly regarded family owned builder that has built homes for 100+ years
- Unsurpassed Service: deal directly with the owners throughout the construction of your home
- In-house Architects: plan your home one on one, creating a design customized to your dreams

## Mikkelson Quality

- 2"x 6" Exterior Wall Construction
- TGI Silent Floor Joists
- 9' Tall Concrete Foundation
- Lifetime Dimensional Shingles
- Custom Closet Systems
- Custom Designed Cabinetry
- Kohler & Moen Quality Fixtures
- Solid Core Interior Doors
- Granite Kitchen Countertops

## Mikkelson Efficiency

- R-50 Attic Insulation
- Programmable Thermostats
- Energy Heel Roof Trusses
- Energy Star Appliances
- Low-E Argon Andersen Windows
- Tyvek Wrap & Extensive Caulking
- Ultra-Low Maintenance Exterior
- Geothermal Heating Options
- Spray Foam Insulation Options



*Building Innovation on Tradition*