

Craftsman Bungalow

1759sq. ft. plus 254 sq. ft. Bonus Room



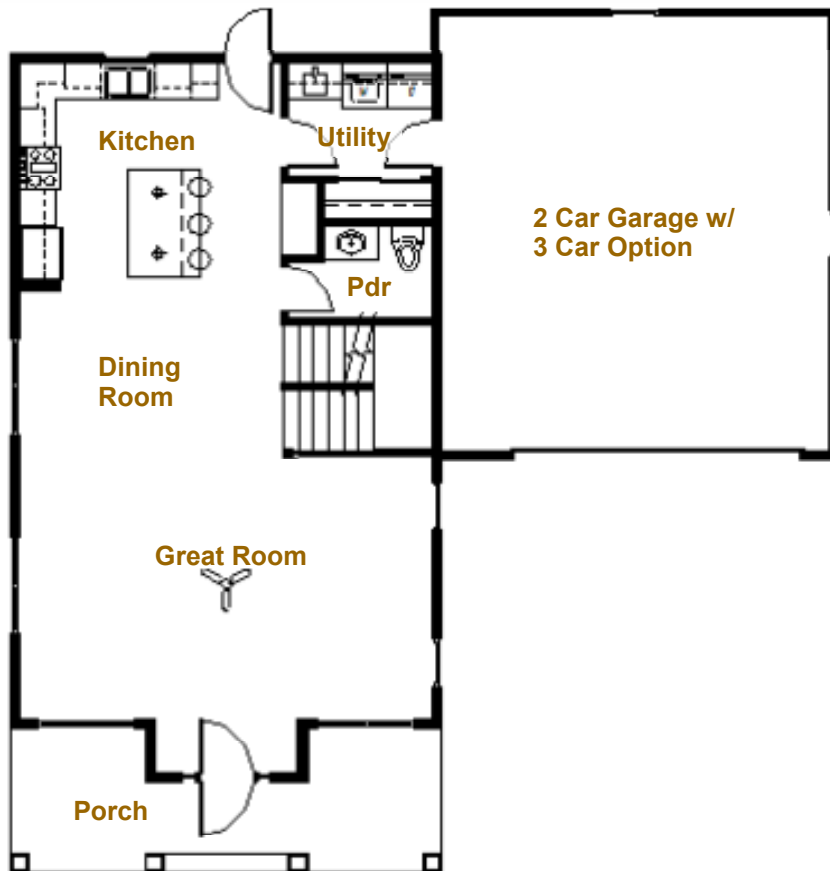
Model Features

- 1759 sq. ft. Bungalow
- Open Floor Plan
- Generous Great Room
- 3 Bedrooms
- 2.5 Bathrooms
- Front Porch
- Large Island in Kitchen



Building Innovation on Tradition

Craftsman Bungalow



Mikkelson Features

- 1759 sq. ft. (+254 sq. ft. Bonus option)
- Open Concept Floor Plan
- 3 Bedrooms, 2.5 Bathrooms
- First Floor Laundry
- Spacious Front Porch

Mikkelson Service

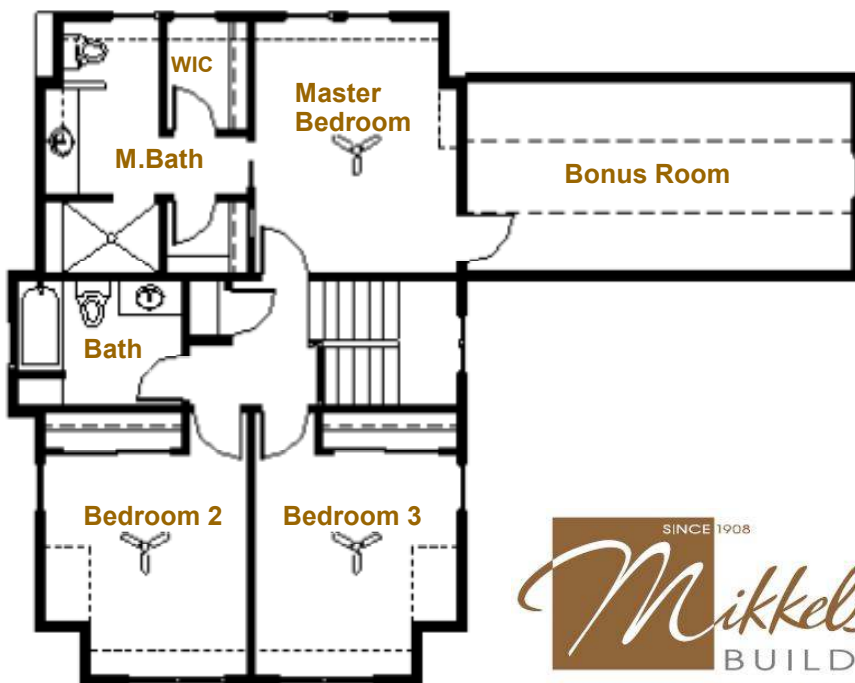
- Peace of mind: work with a highly regarded family owned builder that has built homes for 100+ years
- Unsurpassed Service: deal directly with the owners throughout the construction of your home
- In-house Architects: plan your home one on one, creating a design customized to your dreams

Mikkelson Quality

- 2" x 6" Exterior Wall Construction
- TGI Silent Floor Joists
- 9' Tall Concrete Foundation
- 50 Year Dimensional Shingles
- Custom Closet Systems
- Custom Cabinet Design
- Secure Schlage Door Hardware
- Kohler & Moen Quality Fixtures
- Solid Core Interior Doors

Mikkelson Efficiency

- R-50 Attic Insulation
- Multiple Zone Heating
- Energy Heel Roof Trusses
- Energy Star Appliances
- Low-E Argon Filled Dual Pane Silverline Windows
- Tyvek wrap & Extensive Caulking
- Insulated Raised Panel Garage Doors
- Geothermal Heating Option
- Low Maintenance Exterior



Building Innovation on Tradition