

# The Shorewood

1633 sq. ft. plus 461 sq. ft. Bonus Room



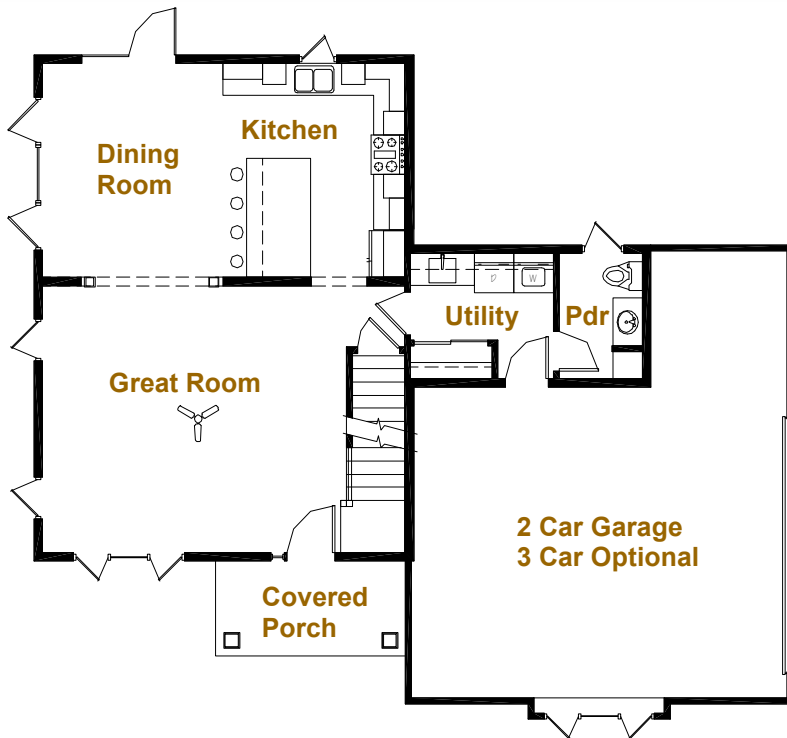
## Model Features

- 1633 sq. ft. Craftsman
- Open Concept Floor Plan
- Large kitchen with island
- 3 Bedrooms
- 2.5 Bathrooms
- Second Story Loft
- Front Porch
- Bonus Room (461 extra sq. ft.)
- First Floor Laundry



*Building Innovation on Tradition*

# The Shorewood



## Base Price: \$207,000

- 1633 sq. ft. (+461 sq. ft. Bonus)
- Open Concept Floor Plan
- 3 Bedrooms, 2.5 Bathrooms
- First Floor Laundry
- Second Floor Loft

## Mikkelson Service

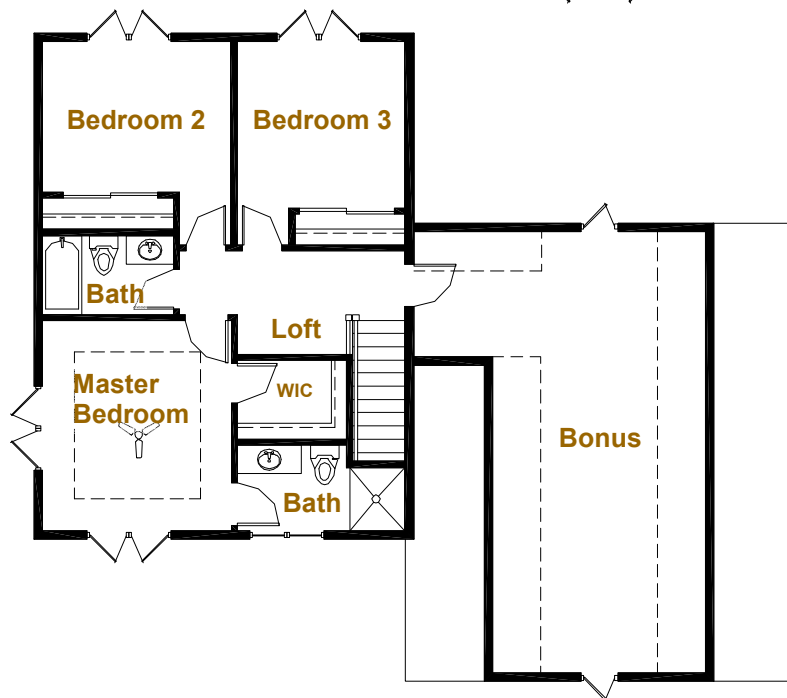
- Peace of mind: work with a highly regarded family owned builder that has built homes for 100+ years
- Unsurpassed Service: deal directly with the owners throughout the construction of your home
- In-house Architects: plan your home one on one, creating a design customized to your dreams

## Mikkelson Quality

- 2" x 6" exterior wall construction
- TGI silent floor joists
- 9' tall concrete foundation
- 30 year dimensional shingles
- California Closet systems
- Custom cabinetry
- Secure Schlage door hardware
- Kohler & Moen quality fixtures
- Solid core interior doors

## Mikkelson Efficiency

- R-50 attic insulation
- Multiple zone heating
- Energy heel roof trusses
- Energy Star appliances
- Low-E Argon filled dual pane Anderson Windows
- Tyvek wrap & extensive caulking
- Insulated raised panel garage doors
- Geothermal heating option
- Low maintenance exterior



*Building Innovation on Tradition*